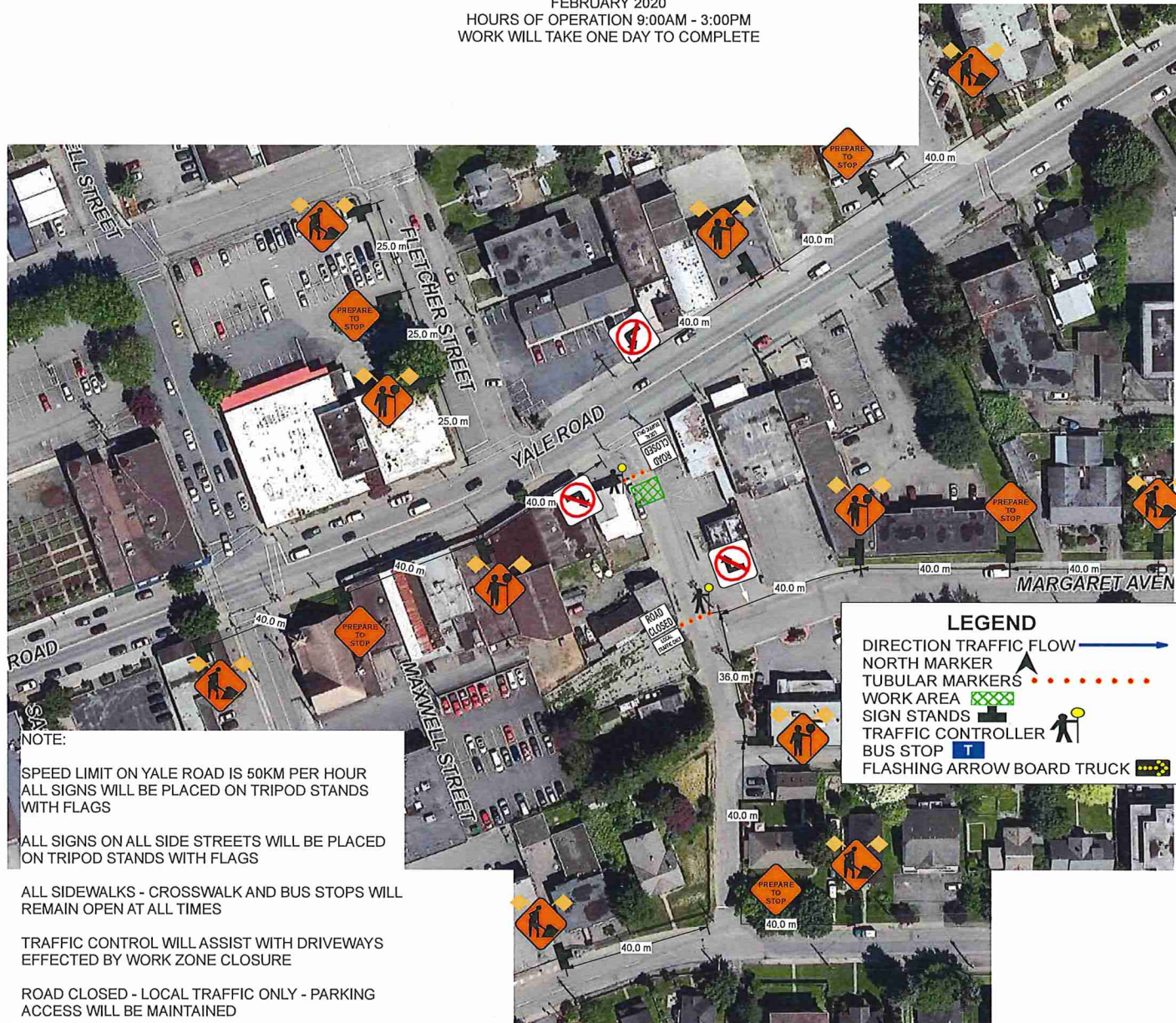


FEBRUARY 2020  
 HOURS OF OPERATION 9:00AM - 3:00PM  
 WORK WILL TAKE ONE DAY TO COMPLETE



**NOTE:**

SPEED LIMIT ON YALE ROAD IS 50KM PER HOUR  
 ALL SIGNS WILL BE PLACED ON TRIPOD STANDS  
 WITH FLAGS

ALL SIGNS ON ALL SIDE STREETS WILL BE PLACED  
 ON TRIPOD STANDS WITH FLAGS

ALL SIDEWALKS - CROSSWALK AND BUS STOPS WILL  
 REMAIN OPEN AT ALL TIMES

TRAFFIC CONTROL WILL ASSIST WITH DRIVEWAYS  
 EFFECTED BY WORK ZONE CLOSURE

ROAD CLOSED - LOCAL TRAFFIC ONLY - PARKING  
 ACCESS WILL BE MAINTAINED

**LEGEND**

- DIRECTION TRAFFIC FLOW →
- NORTH MARKER ▲
- TUBULAR MARKERS ●●●●●
- WORK AREA [Green hatched box]
- SIGN STANDS [Black rectangle]
- TRAFFIC CONTROLLER [Person icon]
- BUS STOP [Blue T icon]
- FLASHING ARROW BOARD TRUCK [Yellow/black arrow icon]